



ESA-346

# S & S ENGINEERS

Engineers, Contractors & Consultants

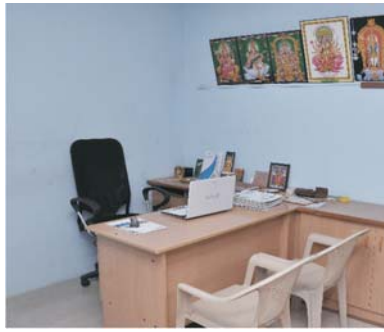


Certificate No : ISO91S160493



# Company Overview





## Introduction

At S & S Engineers our objective is to produce quality Electrical/Security services in a positive closely controlled, well-managed & professional manner.

We are proficient in the execution of either pre-designed or design & build projects. Our field of experience cover all types of Electrical/Security services in projects as diverse as Showrooms, Nightclubs, Health & Fitness, Bars, Hotels, Commercial & Retail complexes, Social Housing, Private & NHS Hospitals, Schools, University's and Sports Centres.

Our extensive design experience allows us to develop the client's performance requirements after detailed discussions, into environmentally sound and workable schemes.

Our contract management knowledge ensures that installations are undertaken to program and within budget, and equally important with a co-operative attitude. We intend to make working with S & S Engineers as easy as possible.

This can only be achieved with good communication and understanding, and the correct use of contract management tools: Reporting, Progress evaluation, and an imaginative flexible approach to solving problems.

Here at S & S Engineers we have many years experience between us, our complimentary styles and ranges of experience have produced a most capable team.

# CORE BUSINESS

- Project Management
- In House Design
- Electrical Installation
- Planned Maintenance
- Inspection and Testing of all Electrical Systems
- Energy Saving Surveys & Reporting
- Carbon Reduction Planning



## KEY SERVICES

- Design ( Full CAD Facilities )
- Lighting.
- Fire Alarms
- Specialist Lighting (Special effects, Building illumination,)
- Computer / Data systems
- Planned Maintenance
- Access Control
- Distribution systems.
- Power
- Emergency Lighting.
- Security systems.
- Voice & Data Installation
- Mechanical Control and Power
- CCTV
- Biometric Scanners (finger print)



S & S Engineers is a wholly owned private limited Company offering contracting services, particularly in the public and private sectors throughout the UK and selected locations overseas. In response to market demands the Company has concentrated on developing a broad range of in house expertise specializing in the following activities

- **Schools/Colleges & Universities**
- **Leisure Centers/Fitness Clubs**
- **Hospital Installations, both Private & NHS**
- **Student Accommodation**
- **Office Developments**
- **Retail Developments**
- **Exhibitions**
- **Light and heavy industrial**
- **Hotels**
- **Apartments and Penthouses**
- **Soccer Centers**
- **Sports Centers**
- **Bars and restaurants**
- **Health and Fitness Centres**
- **Computerized Golf Driving Ranges**
- **Social Housing**
- **Rail Sanding Systems**
- **Rail C.E.T and SMP systems**
- **Brewery/Public Houses**
- **Rail Carraigewash Systems**
- **Nightclubs**
- **Contractual**



# Mission



To provide a level of service that will exceed the expectations of our clients, maintain the highest level of quality and allow our employees the opportunity to grow and prosper. To instil confidence with all parties by professionally managing all aspects of each and every project be it large or small.

## At S & S Engineers :

We aim to supply a high quality and versatile service to all our clients, delivering the best value at all times whilst continuing to develop our people skills through advance training opportunities.

make continuous improvements to our services and people - a prime factor in our continual success.

operate an open and honest relationship with all of our clients and this includes joint decisions making processes, agreed objectives and anticipated goals.

## Our core Principles

### Honesty

To always be truthful, open and candid

### Integrity

To do what we say, live up to the highest standard of fairness and ethical behaviour

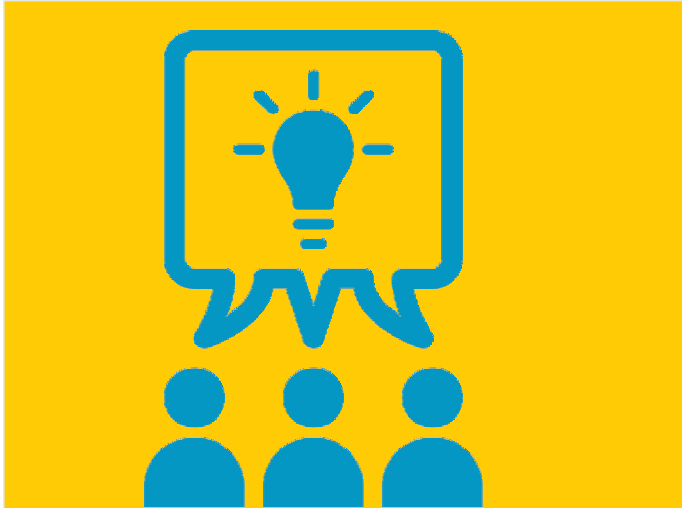
### Culture

We seek new opportunities to learn, to improve, to teach and to add value

### Passion

We love what we do, we lead by example and we take the lead.

# VALUES & VISION



We act with Integrity in all of our interactions never compromising our business ethics. This is the cornerstone of who we are as a company, and is essential to our future success.

## The company has clear values, which are:

- ⦿ Safety – we care about people
- ⦿ Reliability – we have integrity
- ⦿ Responsiveness – we listen to what you say.

SS Engineers has a proven track record of effectively delivering diverse projects to a broad range of customers.

## We are:

- ⦿ Dedicated – proactive and dependable
- ⦿ Agile – flexible and smart
- ⦿ Measured – we make carefully balanced decisions.

# Customer Care

The management of S & S Engineering believes that customer (client) satisfaction is an important key to the success of our business. This message is cascaded throughout the company.

We have developed a comprehensive approach to customer care and to minimising defects on all our schemes. Our objective is to achieve customer satisfaction and repeat business by providing electrical solutions that conform to agreed requirements

S & S Engineers has built its foundations on relationships with partners, associations, clients, contractors, and employees. Our reputation is based upon recommendations and this has helped set us apart from our competitors.

The code of conduct at S & S Engineers stems from traditional values within our workforce. Trust, honesty and understanding encompass many of our beliefs and for your own peace of mind we have implemented the following and will endeavor to:

- ◉ **Be polite, friendly and courteous**
- ◉ **Maintain a high stand of professionalism**
- ◉ **Carry cooperative and flexible attitudes**
- ◉ **Acknowledge concerns**
- ◉ **Be informative**
- ◉ **Listen to Feedback**







## Client satisfaction & feedback

At S & S Engineers, we are constantly working to improve our quality of service to our customers and want to hear feedback from our stakeholders

In order to maintain our continuing high standards we issue a customer satisfaction report on all completed projects that our customers may complete and return. This way we constantly monitor the quality of workmanship through to the quality of management.

We have recently implemented a web-based survey solution that enables clients to easily submit their insights, performance score and feedback.



# S & S Engineering and Consulting Services

- ⦿ Arc Flash Hazard Analysis & Labeling
- ⦿ Expert witness Consulting
- ⦿ Short Circuit Current Studies
- ⦿ Over current protective Device Co ordination Studies
- ⦿ Mission Critical Facility Design (server rooms, Data Centers, etc)
- ⦿ Medium Voltage Substation Design
- ⦿ Lightning protection system Design
- ⦿ Grounding System survey & Design
- ⦿ Reliability Analysis
- ⦿ Voltage Drop Studies
- ⦿ Transient Motor Starting Studies
- ⦿ Harmonic Analysis
- ⦿ Facility Commissioning
- ⦿ Code review & Site Survey
- ⦿ Energy Analysis and TNEB Rebate Application
- ⦿ Construction site Management
- ⦿ As built Drawing verification and Documentation

# Testing and Measurement Services

- ◉ Load Flow and Power Monitoring
- ◉ Medium and low voltage cable Testing
- ◉ Ground Resistance Testing
- ◉ Transformer Testing
- ◉ Oil Testing - PCB, Gas Dielectric Motor Testing
- ◉ Infrared Temperature Measurement
- ◉ AC Current Measurement - Live to 35 kv
- ◉ Under ground Cable and Conduit Locating W/ Fault Locating
- ◉ Electrical Load Measurement
- ◉ Harmonic Waveform Capture
- ◉ AC and DC HI - Pot Testing
- ◉ EMF (Electric & Magnetic Field)
- ◉ Measurement and Documentation
- ◉ Third party Communication Cable Testing & Certification

# Building Commissioning Services

- ◉ MV Relays, Circuit Breakers, Ground Fall Monitors
- ◉ Adjustable Trip Circuit Breakers
- ◉ Variable Frequency Drive Installations
- ◉ Mission Critical Server Room and Data Centers
- ◉ Lightning Control Systems
- ◉ Energy Management Systems
- ◉ Distributed Generation & Peak shaving
- ◉ Stand by and Emergency Generator Installations
- ◉ Fire Alarm and Security System Installations

# RANGE OF PRODUCTS



AMF PANEL



PCC PANEL



MSP PANEL



SSB PANEL



MCC PANEL



CONTROL PANEL



MV PANEL



MSP PANEL



CONTROL PANEL



MV PANEL



## PANEL BOARD

We are providers of an exhaustive range of M.V. Panels, Motor centers, Power Control centers, sub switch board, control panels, Distribution boards & Special purpose panels



like soft starter panels, Temperature control panels, Auto Transformer Panels etc for expert Service related to its Designing, manufacturing and Installation conforming to Indian Electricity Rules 1956. We also have supplied 6000 AMPS MV Panel.

## MV PANEL, MAIN LT PANEL, CHANGE OVER PANEL

We are manufacturing and supplying main change over Panel (MV Panel) is available with following **features** :



- ⦿ Easy operation
- ⦿ Easy change EB & generator power supply with interlocks
- ⦿ Reliable, Trouble free, long life
- ⦿ Perfectly designed and manufactured for Industrial applications
- ⦿ Branded Switch gears used
- ⦿ Also made as client specific requirements

## MOTOR CONTROL CENTRE (MCC)

We are manufacturing and supplying Motor Control Center (MCC) are available with following features :

- Easy operation
- Reliable, Trouble free, long life
- Local / Remote Location & Emergency OFF facility enabled
- Perfectly designed and manufactured for Industrial applications
- Branded Switch gears used



## MV PANEL, MAIN LT PANEL, MAIN CHANGE OVER PANEL

Soft starter panels are used in Proper mills, Refineries, Chemical Industries, Pharmaceuticals and many others. We are also fully equipped to manufacture our range of soft starter panel not only in standard sizes but also as per the specifications of our valued customers.



## AUTOMATIC POWER FACTOR CONTROL PANEL (APFCP)

We are manufacturing and supplying Automatic Power Factor Control Panel (APFCP) available with following

**features :**

- ⦿ Easy operation
- ⦿ Reliable, Trouble free, long life
- ⦿ Perfectly designed and manufactured for Industrial applications
- ⦿ Branded Switch gears used



## CONTROL PANEL BOARD

We are proficient providers of premium Control Panel Boards. These boards operate an advanced microprocessor based generators set monitoring, metering protection and control system that ensures unmatched operational ability. Our Control Panel Boards comes integrated with digital paralleling control devices such as

Synchronizers, Load sharing controls and KVAR / Power factor controls to ensure world class genset performance.



## ANNUNCIATION PANEL - TRANSFORMER

We offer Transformer Annunciation Panel with following **features** :

- ⦿ Alarm, Trip & Test for Transformer winding Temperature
- ⦿ Alarm, Trip & Test for Transformer Oil Temperature
- ⦿ Alarm, Trip & Test for Transformer buchholz relay.



## DESK TYPE OPERATING PANEL



We supply and install for desk type control operation Panel

## OUT DOOR FEEDER PILLAR PANEL



Soft starter panels are used in Proper mills, Refineries, Chemical Industries, Pharmaceuticals and many others. We are also fully equipped to manufacture our range of soft starter panel not only in standard sizes but also as per the specifications of our valued customers.



## POWER DISTRIBUTION BOARD (PDB)

Our clients can avail from us a wide assortment of power Distribution Boards that ensure efficient distribution of both high tension and low tension supply. The boards offered by us are fabricated in compliance with a norms set by electrical board's regulations and encompass optimum quality switches and changeovers. We have integrated highly advanced display panels on these boards that keep the users aware about the relevant information. The competency of our professionals to customize these as per industry specific requirements make our boards widely demanded in the market. Some of the silent attributes and applications of our boars include :

- ⦿ Main source of power distribution in an industrial or Commercial plant
- ⦿ Multifunction Meter
- ⦿ Indicators are provided on Incomer and as on Outgoing feeder.



## 11/22/33 KV POLE SUBSTATION



Our wide range of Engineering Services also includes Substation Structure Service that meets the requirements of Spinning mills Paper mills, Steel Furnace & Rolling mills, Machine tool manufacturing industries for various power transmission applications. These structures are manufactured using latest technology with quality stainless steel that ensures.

## INDUSTRIAL LIGHT FITTINGS

We supply and install for desk type control operation Panel

- ⦿ Supplying Components
- ⦿ 1 x 40W Industrial tube light fittings for office
- ⦿ 2 x 40W Industrial tube light fittings for Spinning mills
- ⦿ 1 x 40W Medium / high bay sodium / mercury Vapour lamp fitting with lamp for Industrial / Street light
- ⦿ 2 x 40W and all type lighting wiring carried out for Industrial lightings



## TRANSFORMER

We offer, supply and erect for the following

Types of Transformers

- ⦿ Power Distribution Transformers
- ⦿ Furnace Duty Transformers
- ⦿ Dual Secondary Transformers
  
- ⦿ We erect all type Transformers with necessary U.G.Cables & Bus.



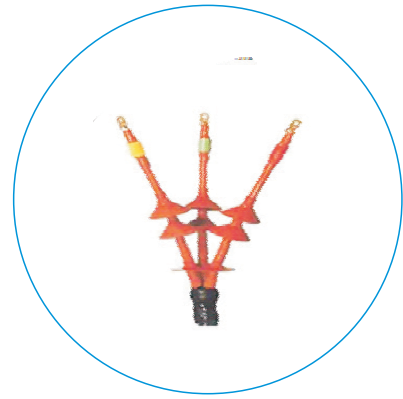
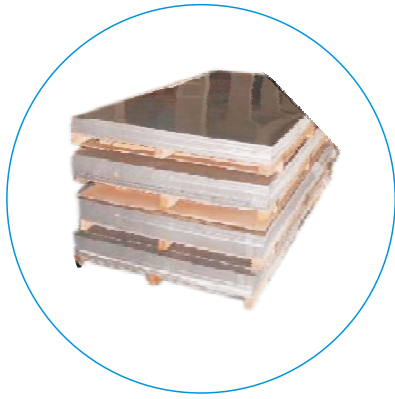
## BUS DUCT

The Electrical Connection between  
Distribution transformer and Main  
change over Panel.

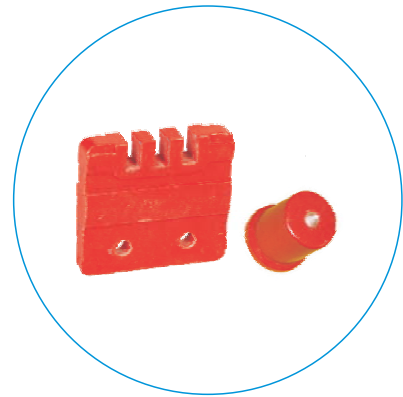
- ⦿ Furnace Duty Transformers to Indicator of  
Electrical furnace
- ⦿ Panel to Panel Bus duct



# ACCESSORIES



RAYCHEM **M-seal** K-Seal



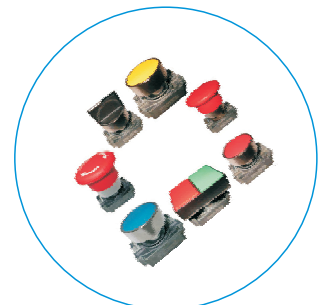
POWERMAT



TEKNIG



SIEMENS EPCOS



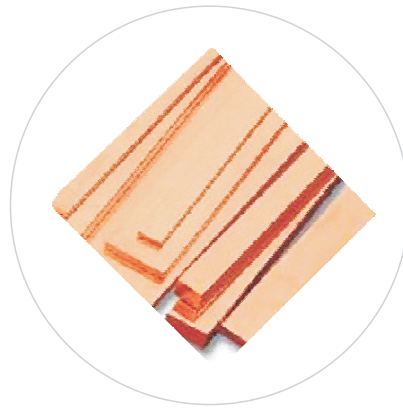
TEKNIG



SIEMENS



Schneider Electric



BUSMAN

JINDAL



ELEMESEURE CONZERV



POLYCARB

RR/KÄBEL

GLOSTER



legrand

Schneider Electric



KAPPA

RR/KÄBEL

WHERE QUALITY DEFINES EVERYTHING





# S & S Engineers

CLIENT LIST



# List of Client Logos



SERVALAKSHMI PAPER LIMITED  
ECO-FRIENDLY PAPER FOR EVERLASTING IMPRESSIONS



SIEMENS



S.no	Client	Nature of the project	Size of the Project	Location
1.	M/S. Hyatt Place	Hotel & Resorts	1 x 800KVA, 11KV/433V	Rameswaram
2.	M/S. Kanishk Gold P Ltd	Gold Manufacturing	1 x 1000KVA, 11KV/433V Tr.	Chennai
3.	M/S. Tradeline Enterprises P Ltd	Textiles	1 x 2000KVA, 11KV/433V Tr.	Chennai
4.	M/S. Meenakshi Hospital	Hospital	1 x 500KVA, 11KV/433V Tr.	Tanjore
5.	M/S. Shri Govindaraja Textiles P Ltd	Textiles	2 x 2500KVA, 11KV/433V Tr.	Aruppukottai
6.	M/S. Sri Sathu Spinning Mills P Ltd	Textiles	1 x 1600KVA, 11KV/433V Tr.	Madurai
7.	M/S. Sri Seshasayee Paper and Boards Ltd	Paper Mill	LT Panel Supply & Liassing	Tirunelveli
8.	M/S. Shri Govindaraja Textiles P Ltd	Textiles	4 x 3150KVA, 33KV/433V Tr.	Andhrapradesh
9.	M/S. Madura Containers	Plastic Industry	1 x 250KVA, 11KV/433V Tr.	Madurai
10.	M/S. Theni Gurukrishna Textile Mills Ltd	Textiles	1 x 1600KVA, 11KV/433V Tr. 1 x 800KVA, 11KV/433V Tr. 1 x 1000KVA, 11KV/433V Tr.	Theni
11.	M/S. Kodaikanal International School	School	LT Panel Supply Only	Kodaikanal
12.	M/S. Lakshmi Madhavan Hospital	Hospital	1 x 500KVA, 11KV/433V Tr.	Tirunelveli
13.	M/S. MKS Textiles	Textiles	1 x 500KVA, 11KV/433V Tr.	Srivilliputtur
14.	M/S. Mepco Speciality Products	Metal Power Manufacturing	1 x 250KVA, 11KV/433V Tr.	Madurai

S.no	Client	Nature of the project	Size of the Project	Location
15.	M/S. Siemens Software Solution Ltd	Software Industry	2 x 1000KVA DG	Bangalore
16.	M/S. Brindha Cotton Mills P Ltd	Textiles	1 x 500KVA, 11KV/433V Tr.	Ambasamudram
17.	M/S. Taj Textiles	Textiles	1 x 500KVA, 11KV/433V Tr.	Srivilliputtur
18.	M/S. Shri Govindaraja Mills Ltd Unit-II	Textiles	2 x 200KVA, 11KV/433V Tr. 1 x 2500KVA, 11KV/433V Tr.	Aruppukottai
19.	M/S. Sri Ganapathi Mills Ltd	Textiles	LT Panel Supply Only	Tirunelveli
20.	M/S. Subburaj Cotton Mills P Ltd	Cotton Mill	LT Panel Supply Only	Rajapalayam
21.	M/S. Gee Gee Kay P Ltd	Chemical Industry	1 x 630KVA, 22KV/433V Tr.	Tuticorin
22.	M/S. Theni Gurukrishna Textile Mills Ltd	Textiles	1 x 800KVA, 11KV/433V Tr.	Perundurai
23.	M/S. Jaisar Spintex P Ltd	Sizing & Bleaching Industry	1 x 500KVA, 11KV/433V Tr.	Sankarankovil
24.	M/S. Brindha Cotton Mills P Ltd	Spinning Mills	1 x 1600KVA, 11KV/433V Tr.	Perumalpatti
25.	M/S. Shri Ramalinga Mills Ltd B Unit	Spinning Mills	4 x 1000KVA, 11KV/433V Tr.	Aruppukottai
26.	M/S. Sree Jaisar Spinning Mills P Ltd	OE Unit	1 x 800KVA, 11KV/433V Tr.	Sankarankovil
27.	M/S. Sri Gee Arr Spinners P Ltd	Spinning Mill	1 x 500KVA, 11KV/433V Tr.	Krishnankovil
28.	M/S. Thangabagya Spinning Mill P Ltd	Spinning Mill	1 x 500KVA, 11KV/433V Tr.	Rajapalayam

S.no	Client	Nature of the project	Size of the Project	Location
29.	M/S. Family Plastic P Ltd	Plastic Industry	1 x 630KVA, 11KV/433V Tr.	Tirunelveli
30.	M/S. Shri Govindaraja Mills Ltd Unit-1A	Spinning	1 x 2500KVA, 11KV/433V Tr. 1 x 1600KVA, 11KV/433V Tr. 1 x 900KVA, 11KV/433V Tr.	Aruppukottai
31.	M/S. ATG Tyres P Ltd	Tyre Manufacturing	1 x 1400KVA, 33KV/433V Tr.	Tirunelveli
32.	M/S. Hatsun Agro Product Ltd	Agro Pruduct	1 x 1000KVA, 11KV/433V Tr.	Vellichanthai
33.	M/S. Silver Spring Spinners India P Ltd	Spinning Mill	LT Panel Supply Only	Aruppukottai
34.	M/S. Sri Ranga Textiles P Ltd	Textiles	1 x 630KVA, 11KV/433V Tr. 1 x 500KVA, 11KV/433V Tr.	Aruppukottai
35.	M/S. Hatsun Agro Product Ltd	Agro Product	1 x 500KVA, 11KV/433V Tr.	Guduvancheri
36.	M/S. Hatsun Agro Product Ltd	Agro Product	1 x 2000KVA, 11KV/433V Tr.	Tirunelveli
37.	M/S. Shri Jayavarthan Spinning Mills Ltd	Spinning	1 x 630KVA, 11KV/433V Tr.	Aruppukottai
38.	M/S. Shri Govindaraja Mills Ltd Unit-1B	Spinning	1 x 1600KVA, 11KV/433V Tr. 1 x 1000KVA, 11KV/433V Tr.	Aruppukottai
39.	M/S. Jayadevi Mills P Ltd	OE Unit	1 x 2000KVA, 11KV/433V Tr.	Aruppukottai
40.	M/S. Standard Match Industries P Ltd	Match Industry	LT Panel Supply Only	Sivakasi
41.	M/S. Shri Govindaraja Textiles P Ltd	Textiles	1 x 20MVA, 110/11KV Tr. (Substation)	Aruppukottai





Certified

Certified

**CPRI**

**TEST REPORT**

**Central Power Research Institute**  
 (A Govt. of India Society)  
 P.B.No. 8066, Sadashivnagar Post Office,  
 Sir C.V. Raman Road,  
 Bangalore - 560 080 (INDIA)

**SHORT CIRCUIT LABORATORY  
 CENTRAL POWER RESEARCH INSTITUTE**  
 (Member of STL)  
 P.B NO 8066, SADASHIVNAGAR POST OFFICE  
 SIR C.V RAMAN ROAD, BANGALORE - 560 080 (INDIA)  
 Phone: +91 (0) 80 - 2360282 Fax: +91 (0) 80 - 23601213

**CPRI** **TEST REPORT** Sheet 1 of 4

Test Report Number: SC11025A Date: 10<sup>th</sup> February, 2011

**Name & Address of the Customer:** M/s. S & S Engineers,  
7/450, Odagpath St,  
Kunich Nagar, Sarinmathapuram,  
Rajapet - 526 117.

**Name & Address of the Manufacturer:** M/s. S & S Engineers,  
7/450, Odagpath St,  
Kunich Nagar, Sarinmathapuram,  
Rajapet - 526 117.

**Particulars of sample tested:** Low-voltage switchgear and controlgear assembly -  
LT panel

**Condition of the sample on Receipt:** New

**Type:** Indoor, Cubicle  
**Designation:** PCC LT panel  
**Serial Number:** -  
**Number of samples tested:** One  
**Date (of test):** 12<sup>th</sup> January, 2011  
**CPRI sample code (if any):** SC1150003

**Particulars of tests conducted:** Verification of the short-circuit withstand strength

**Test in accordance with:** Standard Specification: Sub-clause 2.2.3 of IS-9523 (Part 1): 1993 /  
IEC Pub. 438-1 (1993) (Reaffirmed 2004)

**Sampling plan:** Not applicable  
**Customer's requirement:** 50 kA rms for 1.0 s & 100 kA peak on phase  
bus-bars

**Deviations if any:** None

**Name of the witnessing persons:**

**Customer's representative:** Mr. M. Nair  
**Other than customer's representative:** None

**Test subcontracted with:** None  
**address of the laboratory:** -

**Documents constituting this report (in words):**

Number of sheets: Four  
 Number of oscillograms: Three  
 Number of graphs: Nil  
 Number of photos: Two  
 Number of test circuit diagrams: Two  
 Number of drawings: Two

**Test Engineer:**  **Joint Director:** 

Certified

Certified

**SHORT CIRCUIT LABORATORY  
 CENTRAL POWER RESEARCH INSTITUTE**  
 (Member of STL)  
 P.B NO 8066, SADASHIVNAGAR POST OFFICE  
 SIR C.V RAMAN ROAD, BANGALORE - 560 080 (INDIA)  
 Phone: +91 (0) 80 - 2360282 Fax: +91 (0) 80 - 23601213

**CPRI** Sheet 3 of 4

Report Number: SC11025A

**Schedule of tests**

**VERIFICATION OF THE SHORT-CIRCUIT WITHSTAND STRENGTH (Sub-clause 2.2.2)**

**Test conditions:**

**Source:** Short circuit generator

**Test on phase bus-bars:** Three

**Test on neutral bus-bar:** Single

**Frequency:** 50 Hz

**Test method:** In clear and new condition, terminals of top horizontal  
bus-bars connected to shorts.

**Condition before test:** 2 mm thick CRCA sheet, isolated from earth and connected to the  
skittle neutral through a fine-wire fuse (FWF) of diameter 0.1 mm  
and length 50 mm in series with a 2.0 ohm resistor

**Body/Enclosure:** On the end of the vertical bus-bar  
Grounded

**Test details:**

**Test circuit drawing number:** CRT/SC/STC-06A  
**Test on phase bus-bars:** CRT/SC/STC-06A  
**Test on neutral bus-bar:** On the end of the vertical bus-bar  
**Short-circuit applied:** Grounded  
**Short-circuit point:** Grounded

**Test results**

Oscillogram Number	Current (kA)		Duration (s)	Ambient Temperature (°C)	Observations
	Peak	RMS			
SC11025A.5002	108.33 (B-phase)	6 - 43.71 7 - 48.10 8 - 45.74 Average - 45.87*	1.18	23	<b>During test:</b> No abnormality <b>After test:</b> Fine wire fuse intact

\*Equivalent to 50 kA rms for 1.0 s

**Test on horizontal and vertical neutral bus-bar of panel with nearest phase bus-bar as return conductor**

Oscillogram Number	Current (kA)		Duration (s)	Ambient Temperature (°C)	Observations
	Peak	RMS			
SC11025A.5003 (Thermal)	---	30.11	1.1	23	<b>During test:</b> No abnormality <b>After test:</b> Fine wire fuse intact
SC11025A.5004 (Dynamic)	67.02	---	0.1	23	

**VERIFICATION OF THE DIELECTRIC PROPERTIES**


**Condition of the sample:** As after the application of the short-circuit withstand strength test

**Test procedure:** A power frequency voltage of 2.5 kV rms for 1.0 minute was applied with ACB in closed condition between:  
 1. all live parts connected together and enclosure  
 2. each pole and all the other poles connected to enclosure

**Observations:** Withstood / Withstood

**Physical Inspection:** Bus-bars: No visible damage or deformation  
 Supports: Intact

**Remarks:** The sample tested complies with sub-clause of the standard referred to.

**Test Engineer:** 

**SHORT CIRCUIT LABORATORY  
 CENTRAL POWER RESEARCH INSTITUTE**  
 (Member of STL)  
 P.B NO 8066, SADASHIVNAGAR POST OFFICE  
 SIR C.V RAMAN ROAD, BANGALORE - 560 080 (INDIA)  
 Phone: +91 (0) 80 - 2360282 Fax: +91 (0) 80 - 23601213

**CPRI** Sheet 4 of 4

Report Number: SC11025A

**NOTE**

01 This is not a certificate of rating. A certificate of rating is not issued as only limited tests as requested by the customer were carried out.  
 02 The test results relate only to the item(s) tested.  
 03 Publication or reproduction of this report in any form other than by complete set of the whole report and in the language written, is not permitted without the written approval of CPRI.  
 04 Corrections / erasings invalidate the test report.  
 05 Any anomaly / discrepancy in the test report should be brought to our notice within 45 days from the date of issue.


**Additional information:**  
 CPRI issues following types of reports/certificates:

**Test Report:**  
 The test report contains the record of the values of test parameters as obtained during testing, the physical condition of the sample during / after the tests; and copy of oscillogram(s). Test report is issued when partial tests are performed as against the complete test requirement for proving specific ratings.

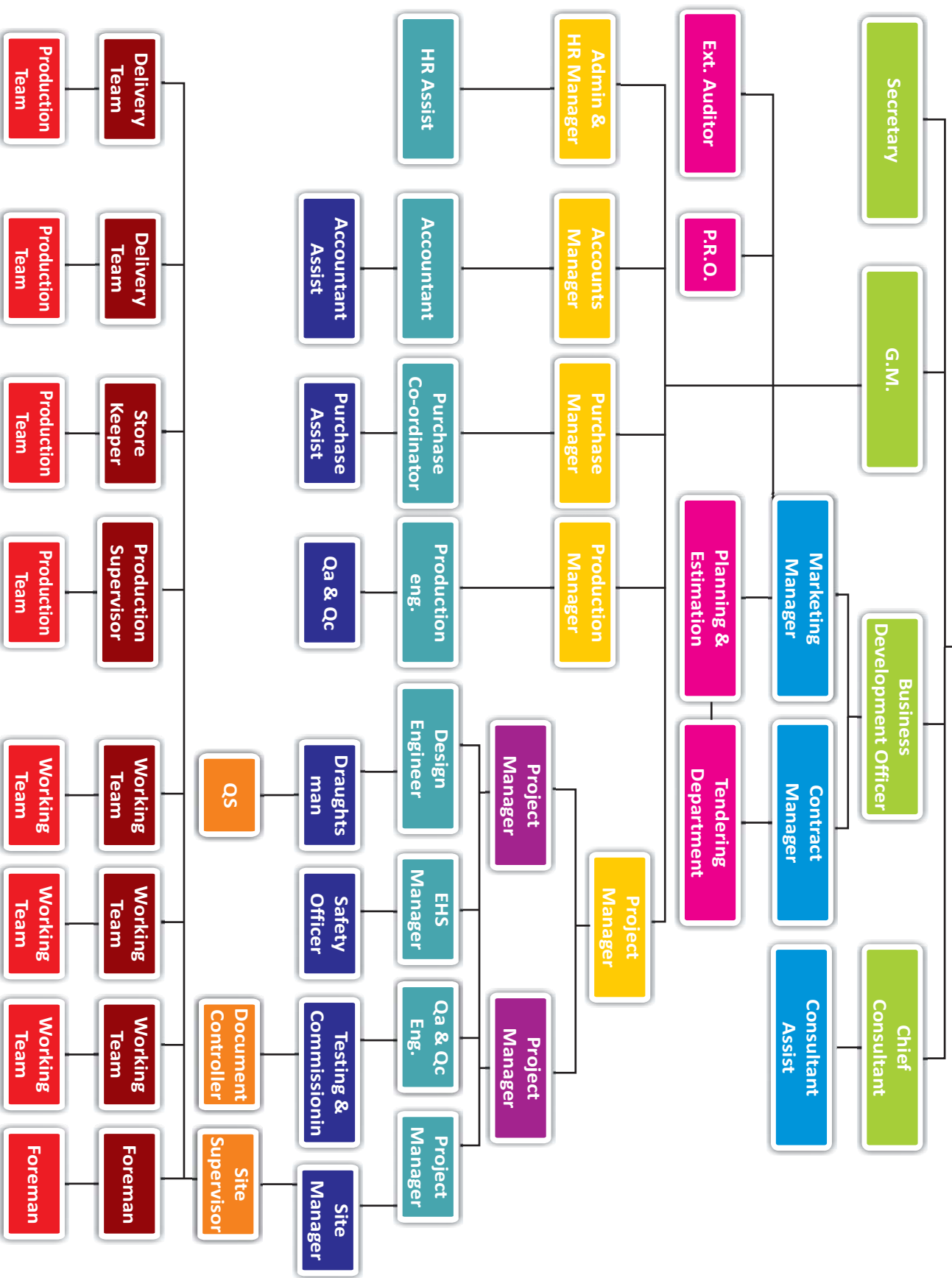
**Sealed Certificate:**  
 The sealed certificate is issued, on request and payment of the prescribed charges thereof only when the sample of particular type and rating has satisfactorily passed all the specified tests in compliance with the condition stipulated in a published National / International standard.

**CPRI issues the following type test certificates based generally on STL Guidelines:**

- I. Type test certificate of Short Circuit Performance.
- II. Type test certificate of Switching Performance.
- III. Type test certificate of Temperature Rise Performance.
- IV. Type test certificate of Dielectric Performance.
- V. Type test certificate of complete type test.

**Test Engineer:** 

# MANAGING DIRECTOR





ESA-346

## **S & S ENGINEERS**

Engineers, Contractors & Consultants

53/1, Marudhu Nagar, **RAJAPALAYAM - 626 117.**

Phone : 04563 - 232004,

E-mail : [ssengineers2009@gmail.com](mailto:ssengineers2009@gmail.com)

[www.sseengineersecgroups.com](http://www.sseengineersecgroups.com)

### **Chennai Branch**

S&S Engineers, ECC Group

No- 3, Govindarajam First Cross Street

West Taramparam, Chennai 600 045

Tamil Nadu State

### **Bangalore Branch**

S&S Engineers, ECC Group

No- 11 & 12/1 - 5th floor A.K Ashrama.

1st main road Deva Gowda Road.

Bangalore- 560 032